

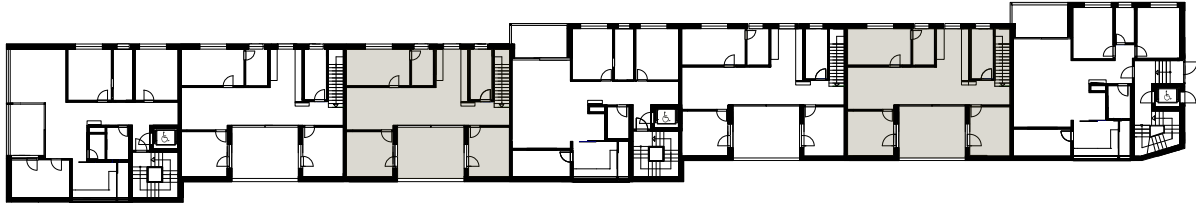
Haus A

Haus B

Haus C

Haus D

Haus E



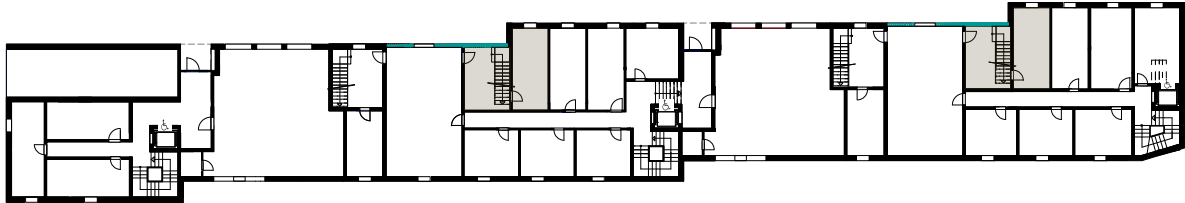
Grundriss Obergeschoss 1:600

**Wohnung B2**

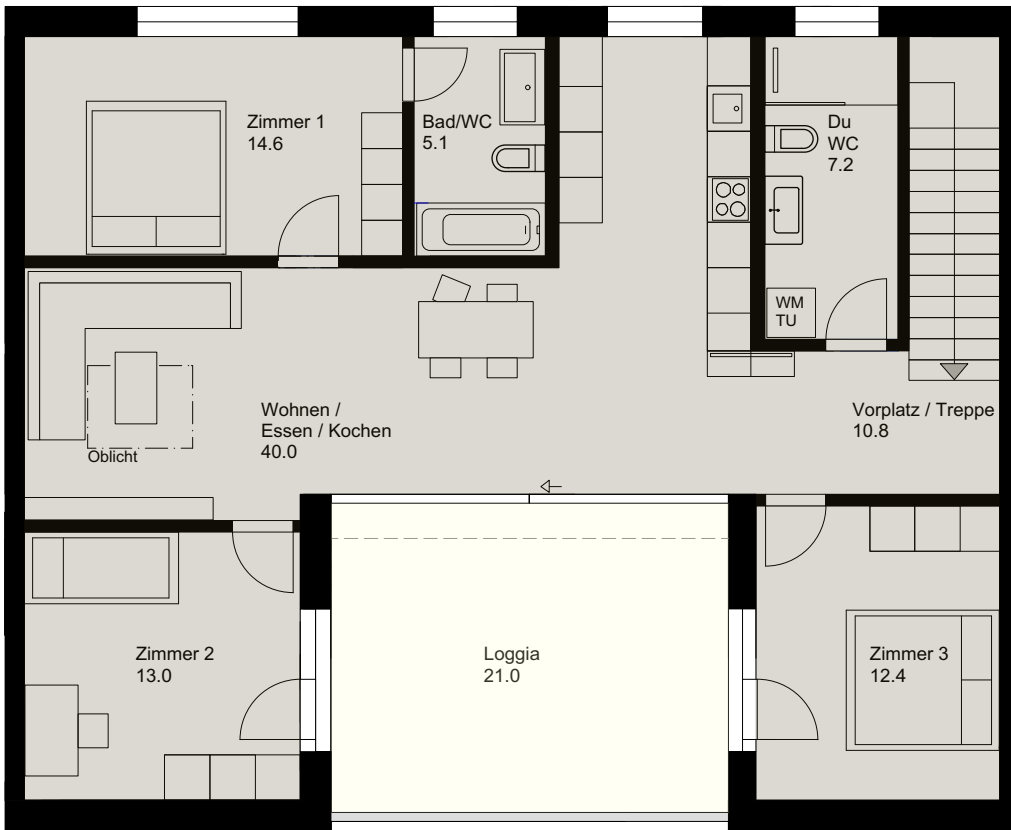
Obergeschoss - 4<sup>1/2</sup> Zimmer - 124.0 m<sup>2</sup>  
Loggia 21.0 m<sup>2</sup>

**Wohnung D2**

Obergeschoss - 4<sup>1/2</sup> Zimmer - 124.0 m<sup>2</sup>  
Loggia 21.0 m<sup>2</sup>



Grundriss Erdgeschoss 1:600



**Obergeschoss**

**Erdgeschoss**

