

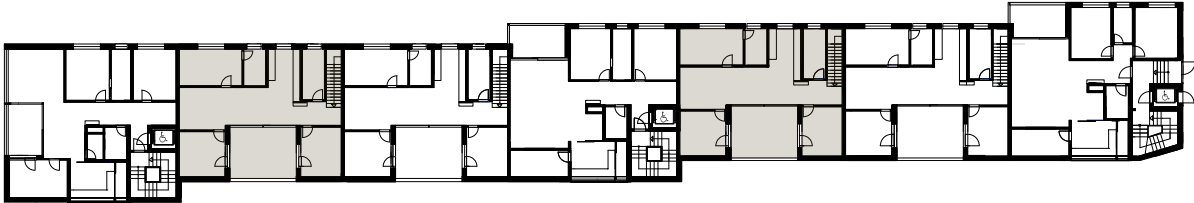
Haus A

Haus B

Haus C

Haus D

Haus E



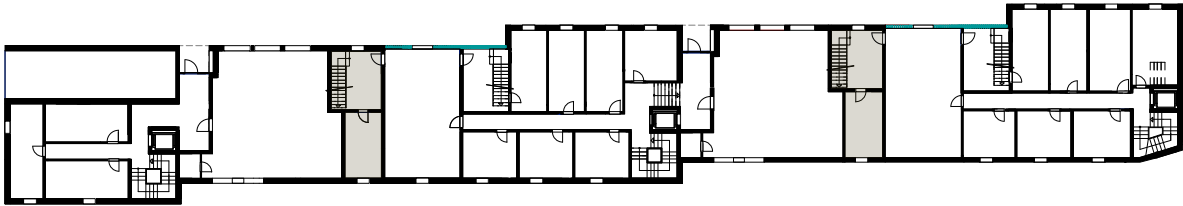
Grundriss Obergeschoss 1:600

**Wohnung B1**

Obergeschoss - 4<sup>1/2</sup> Zimmer - 124.0 m<sup>2</sup>  
Loggia 21.0 m<sup>2</sup>

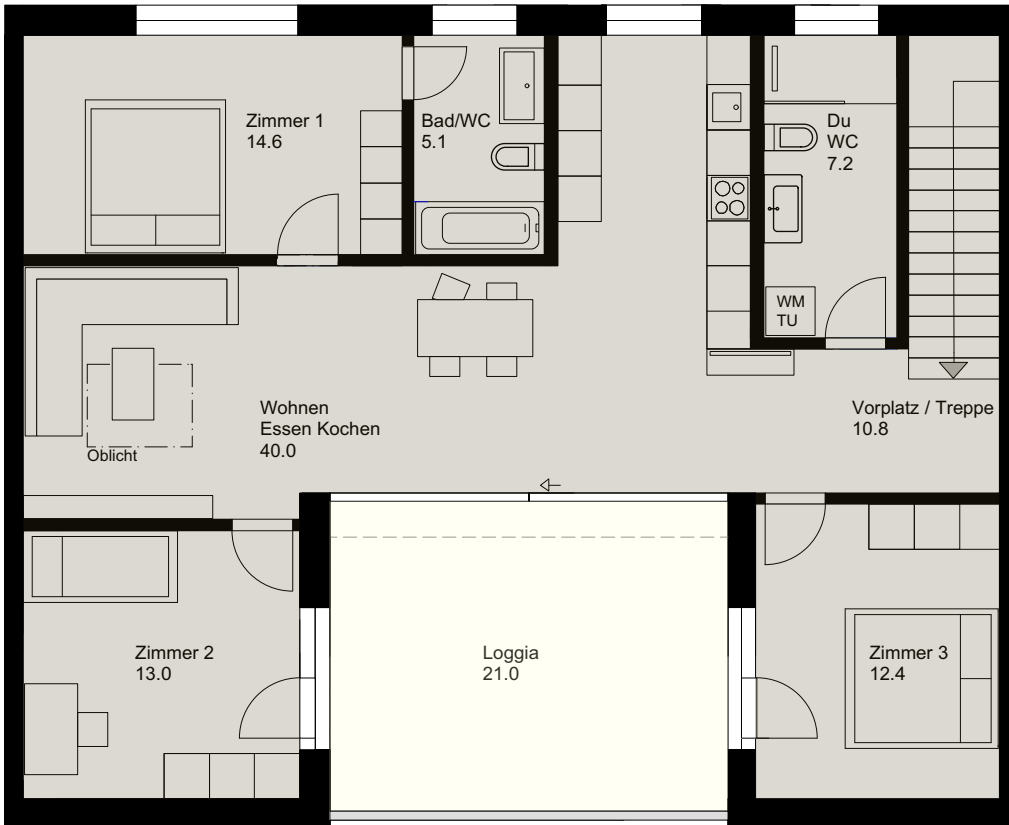
**Wohnung D1**

Obergeschoss - 4<sup>1/2</sup> Zimmer - 124.0 m<sup>2</sup>  
Loggia 21.0 m<sup>2</sup>

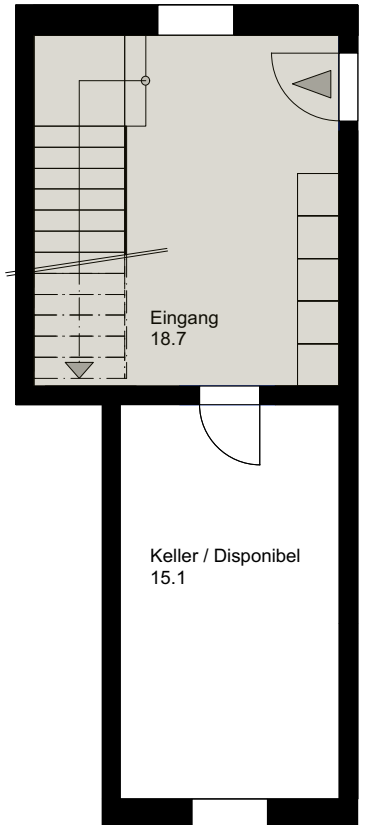


Grundriss Erdgeschoss 1:600

**Obergeschoss**



**Erdgeschoss**



1:100